



YUNEL
ELEKTROMEKANİK
SİSTEM VE TESİSLERİ
SANAYİ LİMİTED ŞİRKETİ

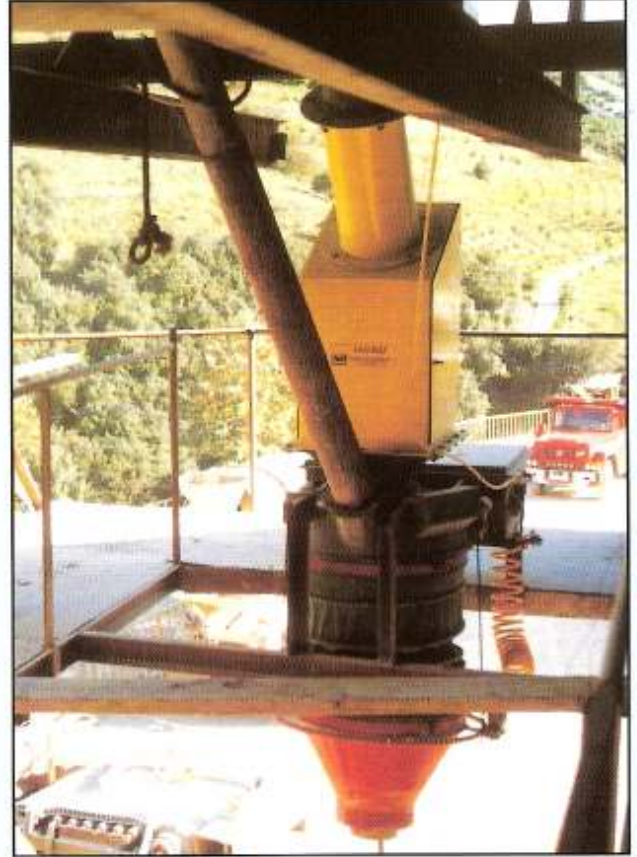
FLO-WAY IMPACT PLATE LOADING & FLOW CONTROL

**Belt-Way
Scales**

AUTOMATION & FLOW CONTROL FOR BULK SOLIDS

YUNEL ELEKTROMEKANİK LTD. Turkey and Belt Way Scales Inc of United States of America have introduced a new line of solids material Flow Meters. The FLO-WAY meter are impact plate devices for measuring free flowing granular or powdered materials.

- Material flows down a tube and strikes an impact plate that is supported by two single point suspension load cells. The patented floating suspension system of FLO-WAY is unique.
- Any material that builds up on the impact plate will not affect the reading. Because the system calibrates itself in accordance with this situation.
- A sophisticated microcomputer and a four line by twenty character liquid crystal display are housed in NEMA 4X waterproof fiberglass enclosure to perform all control and acquisition functions.
- Please call YUNEL Ltd. Sti. for all other features. We are in your service with our engineering and supervisory services.

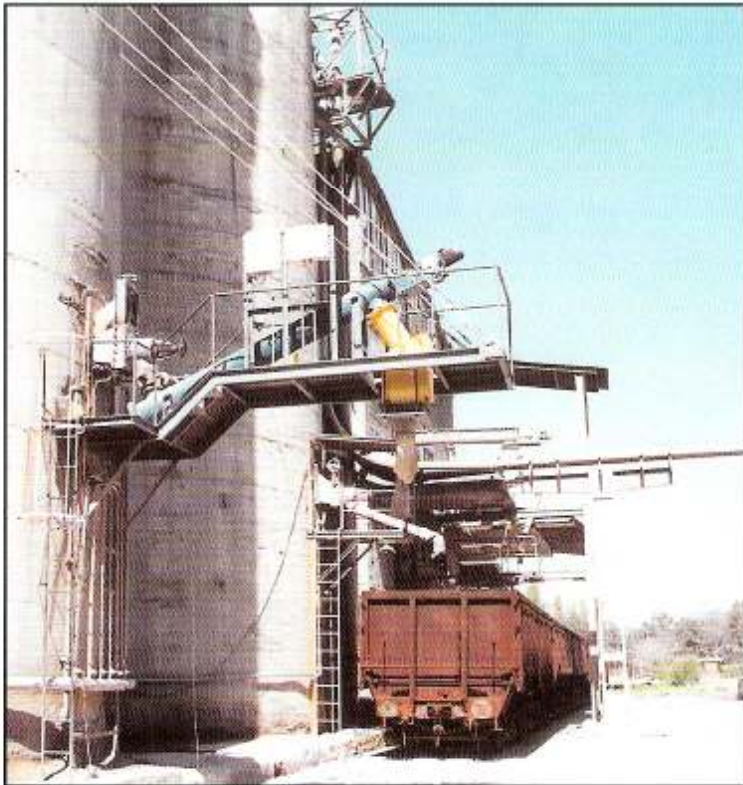
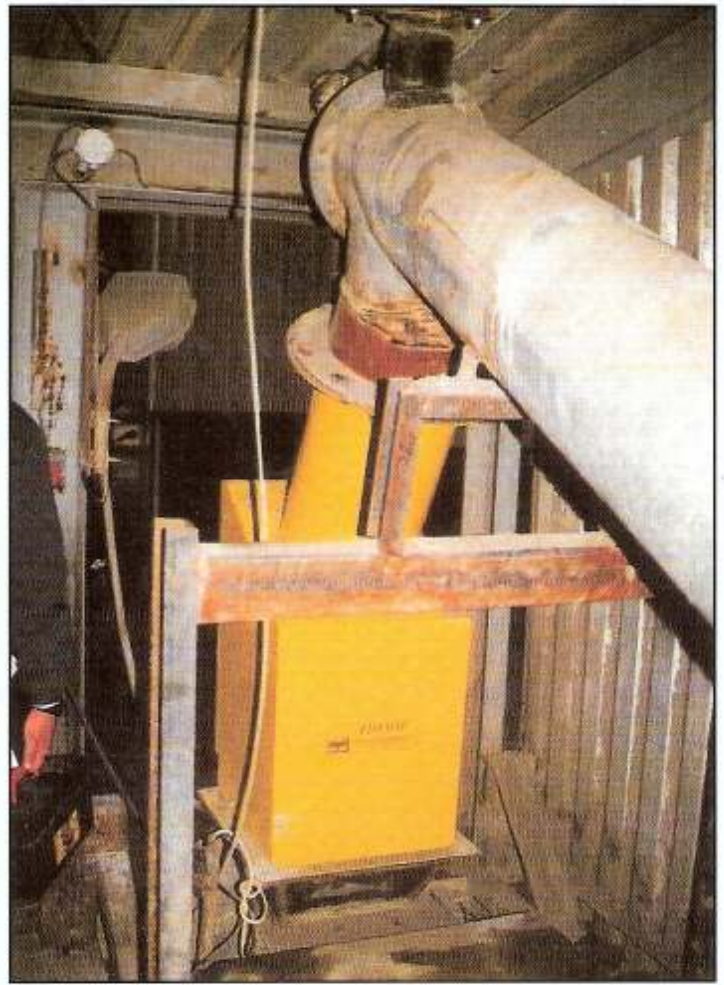


FLO-WAY Flow Meters are available in the followings sizes.

SIZE	QUANTITY OF MATERIAL FLOW t/hr)
4 inch	1 – 15 t/h
6 inch	5 – 40 t/h
8 inch	20 – 90 t/h
10 inch	50 – 150 t/h
12 inch	100 – 250 t/h

Please call for other capacity applications

- The FLO-WAY is stand alone complete system.
- An RS-232 serial port is included to interface to printers, computers, scoreboard displays, and data loggers. But with optional I/O Board you can reach a high speed network.
- Our high-speed network is a true industry standard. Data is sent at a rate of 2,5 million bits per second instead of the usual 9,600 bits per second of traditional RS-232 serial transmission. Therefore you can connect 250 FLO-WAY or SVS equipment in a network to your PC.
- FLO-WAY gives real time flow rate, total weight accumulated and load on the sensing plate. View your production totals for the day to assist you inventory.
- This data can be printed on an office printer.



- A single network cable with an optional software can connect every device to a computer for data collection.
- Batch Control, PID loop Control and blending can be accomplished with the I/O option board available with two and four channel 4-20 mA outputs.
- Using the build in network and PID Control loop you can add a controlled amount of an ingredient to material crossing a belt scale or material flowing through another flow meter.
- Loading to tanker trucks, rolling stocks, vessels etc., in a present amount is possible via remote control start-stop box.

Branch Office : Esat Caddesi No:42/12 K.Esat 06660 - ANKARA - TÜRKİYE
 Phone : +90 312 419 3285 (4 lines) Fax : +90 312 419 3289
 e-mail address : sales@yunel.com Web Site : www.yunel.com

General Directorate : Ankara Çankırı Devlet Karayolu 26. Km. Akyurt - ANKARA - TÜRKİYE
 Phone : +90 312 847 5201 (5 lines) Fax : +90 312 847 5205

